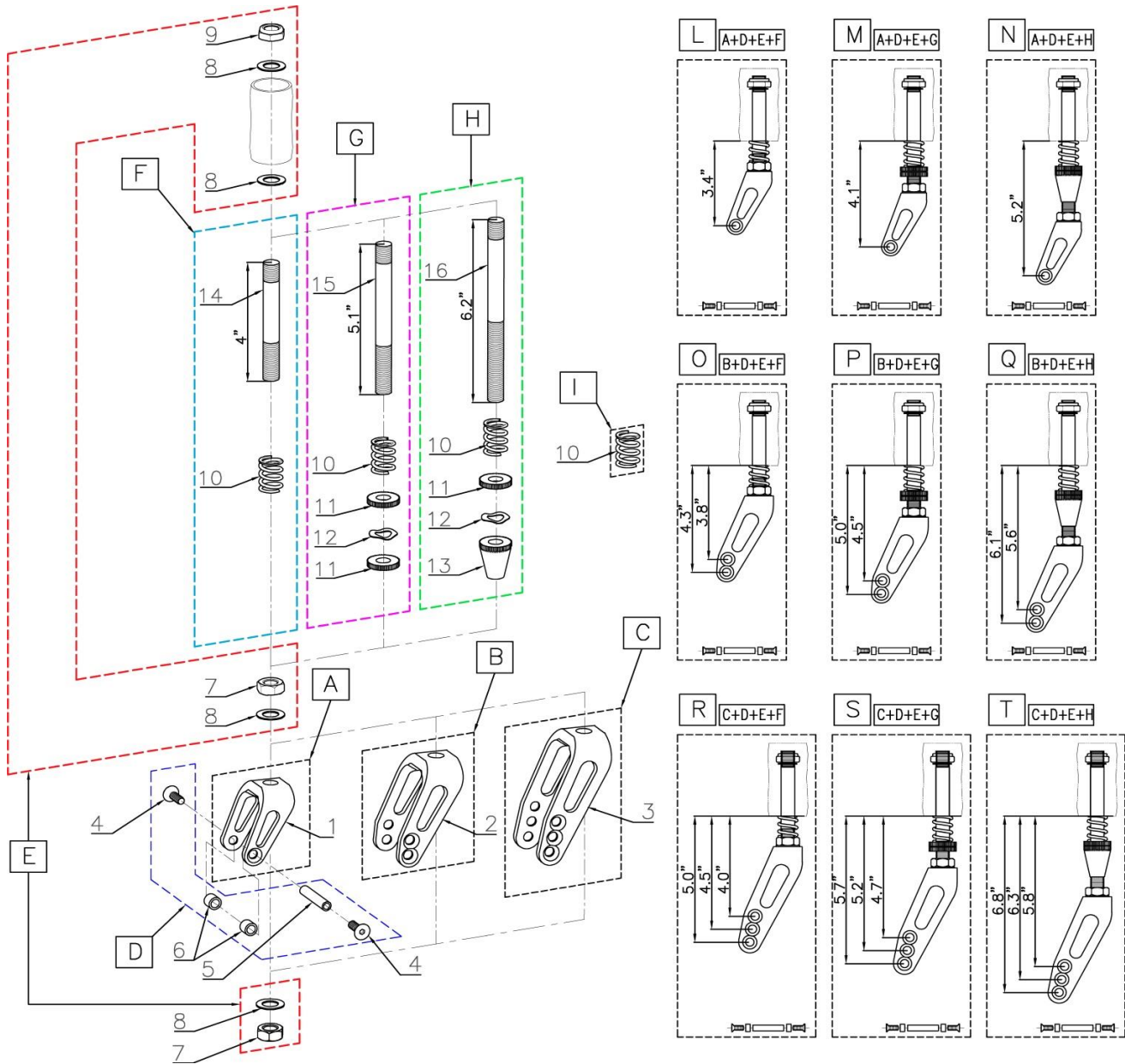


CASTER FORK w / Suspension Spring



POS	Assy #	#	Parts #	QTY	Color	Remark	MSRP	NOTE	
A	-	1	0307-400	1	Blk	Short	per 1pcs	2pcs/chair	
B	-	2	0307-401	1	Blk	Med	per 1pcs	2pcs/chair	
C	-	3	0307-403	1	Blk	Long	per 1pcs	2pcs/chair	
D	1400-01D	4	0620-400	2	Sil	1/4"-28 L:3/4 SFHCS	per set	2sets/chair	
		5	0605-300	1	Sil	Front Caster Axle			
		6	0257-300	2	Sil	3/8" L:1/4" Spacer			
E	1400-01E	7	0121-300	2	Sil	1/2"-20 Nut	per set	2sets/chair	
		8	0119-300	4	Sil	1/2" thin Washer			
		9	0260-300	1	Sil	1/2"-20 Nylon HLN			
F	1500-01F	10	0176-300	1	Sil	Suspension Spring	per set	2sets/chair	
		14	0408-310	1	Sil	Short Axle for Spring			
G	1500-01G	10	0176-300	1	Sil	Suspension Spring	per set	2sets/chair	
		11	0122-300	2	Blk	Knurl Nut - Small			
		12	0120-300	1	Sil	1/2" thin Wavy Wwasher			
H	1500-01H	10	0176-300	1	Sil	Suspension Spring	per set	2sets/chair	
		11	0122-300	1	Blk	Knurl Nut - Small			
		12	0120-300	1	Sil	1/2" thin Wavy Wwasher			
		13	0123-300	1	Blk	Knurl Nut - Large			
			16	0408-304	1	Blk	Long Axle for Spring		
I	-	10	0176-300	1	Sil	Suspension Spring	per 1pcs	2pcs/chair	

POS	Assy #	#	Parts #	QTY	Color	Remark	MSRP	Note
L	1502-01L	-	-	1set	-	Short Fork & Short Axle	per set	2sets/chair
M	1502-01M	-	-	1set	-	Short Fork & Med Axle	per set	2sets/chair
N	1502-01N	-	-	1set	-	Short Fork & Long Axle	per set	2sets/chair
O	1502-01O	-	-	1set	-	Med Fork & Short Axle	per set	2sets/chair
P	1502-01P	-	-	1set	-	Med Fork & Med Axle	per set	2sets/chair
Q	1502-01Q	-	-	1set	-	Med Fork & Long Axle	per set	2sets/chair
R	1502-01R	-	-	1set	-	Long Fork & Short Axle	per set	2sets/chair
S	1502-01S	-	-	1set	-	Long Fork & Med Axle	per set	2sets/chair
T	1502-01T	-	-	1set	-	Long Fork & Long Axle	per set	2sets/chair